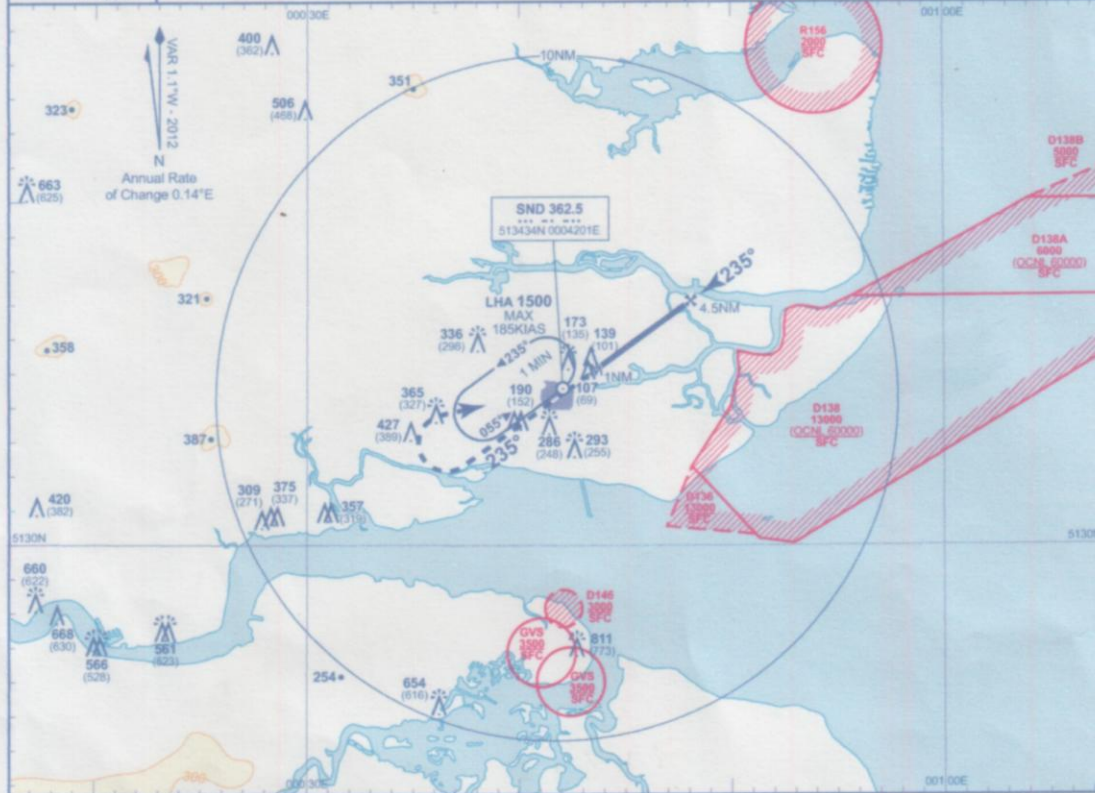


INSTRUMENT APPROACH CHART - ICAO

SOUTHEND
SRA RTR 2NM
RWY 24
(ACFT CAT A,B,C)

	APP 130.775	SOUTHEND APPROACH	AD ELEVATION 55
	TWR 127.725	SOUTHEND TOWER	THR ELEVATION 38
	RAD 130.775, 128.950	SOUTHEND RADAR	OBSTACLE ELEVATION 811 AMSL (773) (ABOVE THR)
	ATIS 136.050	SOUTHEND INFORMATION	BEARINGS ARE MAGNETIC
			TRANSITION ALTITUDE 6000

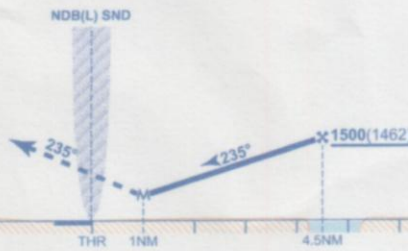


RECOMMENDED PROFILE Gradient 5.24%, 320FT/NM

NM	4.0	3.0	2.0
ALT(HGT)	1370(1332)	1050(1012)	730(692)

Initial and intermediate approach as directed by radar.

MAPt 1NM after RTR
Climb straight ahead to 1500 or 1MIN after passing NDB(L) SND, whichever is the later, turn right to NDB(L) SND at 1500 or as directed.



Aircraft Category	OCA (OCH) Procedure	A	B	C	Rate of descent	G/S KT	160	140	120	100	80
						FT/MIN	850	740	640	530	420
VM(C)OCA (OCH.AAL)	Total Area	600(545)	700(645)	900(845)	RTR to MAPt	MIN:SEC	0:23	0:26	0:30	0:36	0:45

NOTE Aircraft will be required to hold not lower than 2500. Lowest altitude to commence procedure from NDB(L) SND following a missed approach is 1500.

CHANGE: MAG VAR, PROCEDURE, MAP, MSA, MINIMA, REC PROFILE, AD & THR ELEVATION, OBS.

AERO INFO DATE 6 NOV 11

AMDT AIRAC 3/12

Civil Aviation Authority